

Berkshire Traffic Crash Facts 1998-2001



Berkshire Regional Planning Commission

December 2004

Prepared in cooperation with the Massachusetts Department of Public Works and the U.S. Department of Transportation, Federal Highway Administration

Foreword

Berkshire Traffic Crash Facts was prepared by the Berkshire Regional Planning Commission from traffic crash data provided by the Massachusetts Highway Department (MHD). It covers the period from 1998 to 2001. The 2002 data, which is the most recent data available from MHD, was collected in a significantly different manner from the previous years. MHD advises against comparing absolute numbers of crashes from the 2002 database with previous years. Therefore, the 2002 crash data was not considered in generating this report.

Berkshire Traffic Crash Facts presents information on traffic crashes, deaths, and injuries at county and community levels in an easy to understand format. The purpose of this report is to give its readers a better understanding of current traffic safety issues, causal factors and trends of traffic crashes, number and types of crashes, severity of injuries, and other useful information. The information in this report has many uses in regional transportation planning, including corridor studies, prioritization of safety-related capital improvement projects and monitoring the effectiveness over time of various safety improvement strategies. It is also hoped that this report can be used as a tool in raising public awareness of traffic safety trends and the causes of crashes.

Important: The information provided in this report must not be used for legal purposes under any circumstances.

Table of Contents

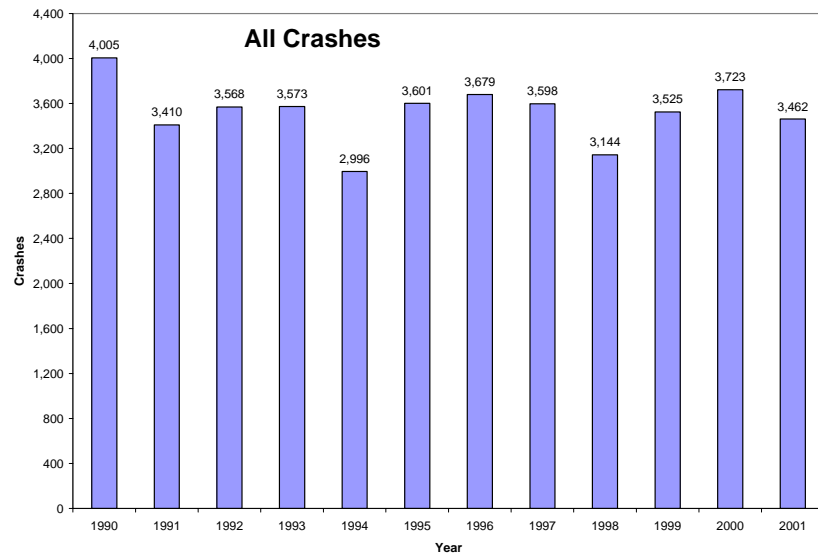
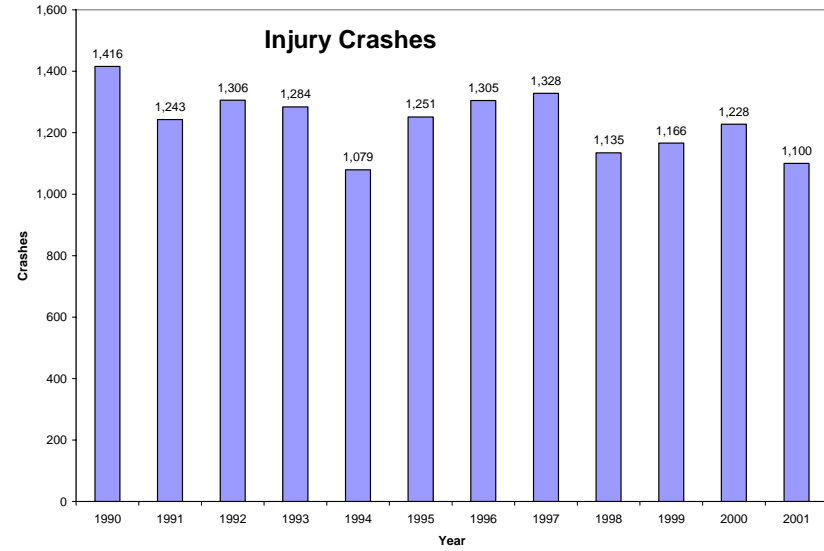
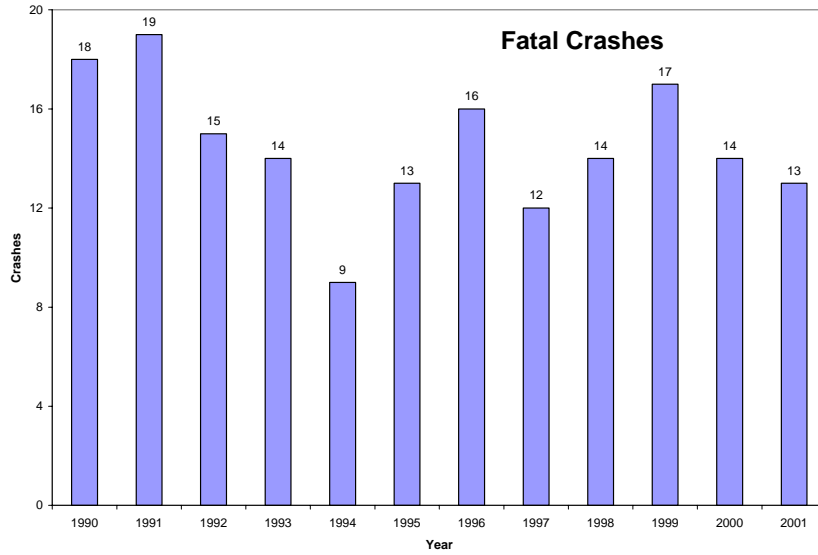
Foreword.....	i
Quick Facts	1
The Big Picture: Countywide Traffic Crash Trends by Severity (1990-2001).....	2
Fatalities and Injuries.....	4
Crash Severity Ratios.....	4
Crash Frequencies.....	4
Month of Year.....	5
Day of Week.....	7
Time of Day	9
First Harmful Event	11
Crash Environment – Weather.....	12
Crash Environment - Road Condition.....	13
Crash Environment - Light Condition	14
Bicycle Crashes.....	15
Pedestrian Crashes	16
Truck Crashes	17
Comparison of Pedestrian, Bicycle, Truck and Other Crashes.....	18
Comparative Statistics: Fatalities per 10,000 Resident Population	19
Crashes by Town.....	20
Crash Rates by Town (1998-2001).....	21
Pedestrian Crashes by Town.....	22
Bicycle Crashes by Town	23
Truck Crashes by Town.....	24
High Traffic Crash Intersections (1998 - 2001).....	25

Quick Facts

Between 1998 and 2001 in Berkshire County:

- 13,854 crashes were reported
- 4,629 injury crashes resulted in 7,055 injuries
- 58 fatal crashes resulted in 67 fatalities
- Three pedestrians and two bicyclists died in road crashes
- The most crash-prone period is between 3:00 pm and 6:00 pm
- The most crash-prone day is Friday
- The most crash-prone month is January, followed by December and July
- One crash was reported every 2 hours and 30 minutes on average
- One injury crash was reported every 7 hours and 35 minutes on average
- One fatal crash was reported every 25 days on average
- One out of three crashes resulted in an injury
- One out of 239 crashes resulted in a fatality
- For each fatal crash, there were 80 injury crashes on average
- Berkshire County's fatalities per 10,000 population rate is higher than the Massachusetts rate, but less than the U.S. rate
- Stockbridge had the highest crash rate per 10,000 population, followed by Becket and Great Barrington

The Big Picture: Countywide Traffic Crash Trends by Severity (1990-2001)

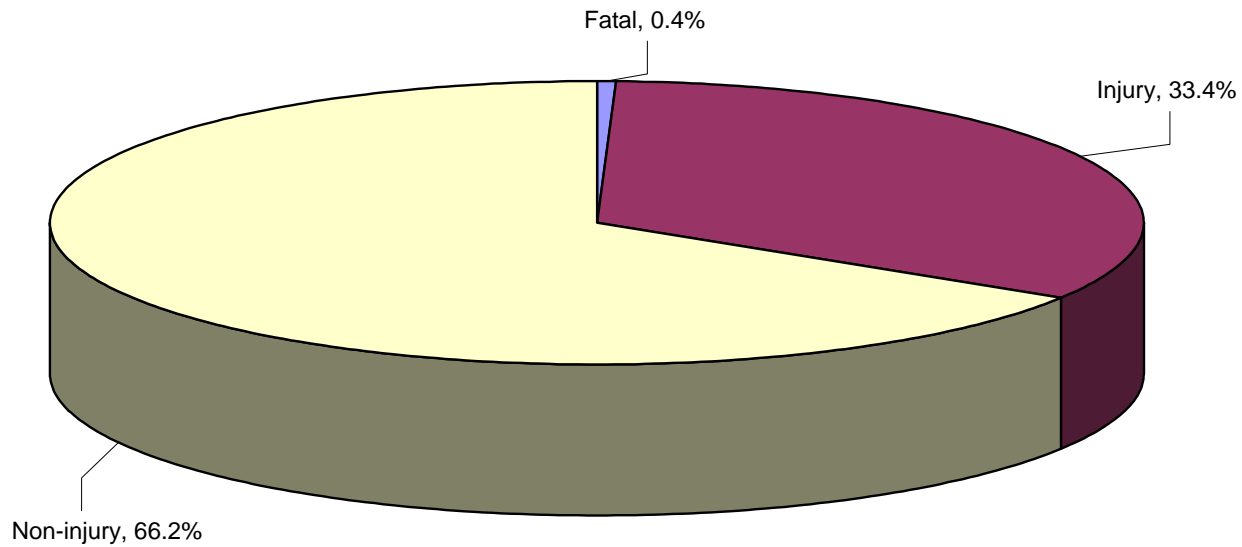


There has been no discernable consistent reduction in fatal, injury, or total crashes from 1990 to 2001

Countywide Traffic Crash Trends by Severity (1998-2001)

	Fatal Crashes	Injury Crashes	Non-injury Crashes	Total
1998	14	1,135	1,995	3,144
1999	17	1,166	2,342	3,525
2000	14	1,228	2,481	3,723
2001	13	1,100	2,349	3,462
Total	58	4,629	9,167	13,854
Percentage	0.4%	33.4%	66.2%	100.0%

Crashes by Severity (1998-2001)



One out of three crashes resulted in an injury

Fatalities and Injuries

Year	Fatalities	Injuries
1998	17	1,677
1999	19	1,759
2000	15	1,971
2001	16	1,648
Total	67	7,055

Between 1998 and 2001, road traffic crashes resulted in 67 fatalities and 7,055 injuries

Crash Severity Ratios

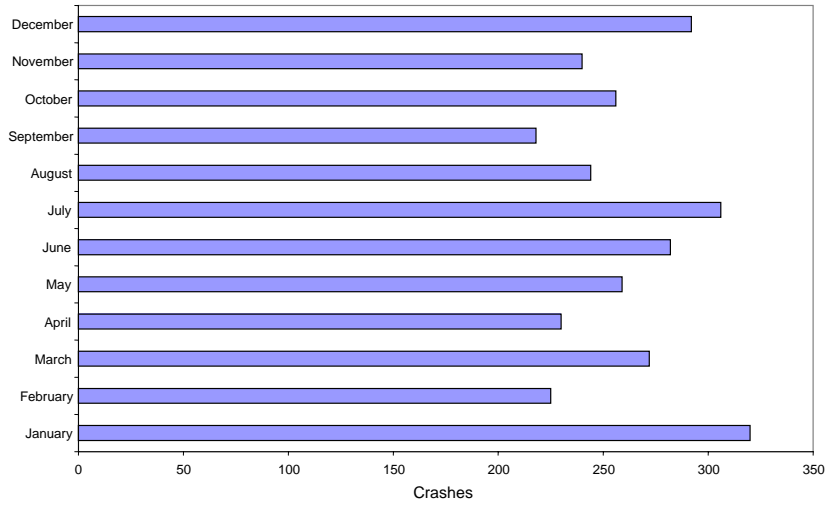
Year	Fatality to total crashes	Injury to total crashes	Fatality to injuries
1998	1 : 224	1 : 2.8	1 : 81
1999	1 : 207	1 : 3.0	1 : 69
2000	1 : 265	1 : 3.0	1 : 88
2001	1 : 266	1 : 3.1	1 : 85
Average	1 : 239	1 : 3.0	1 : 80

Crash Frequencies

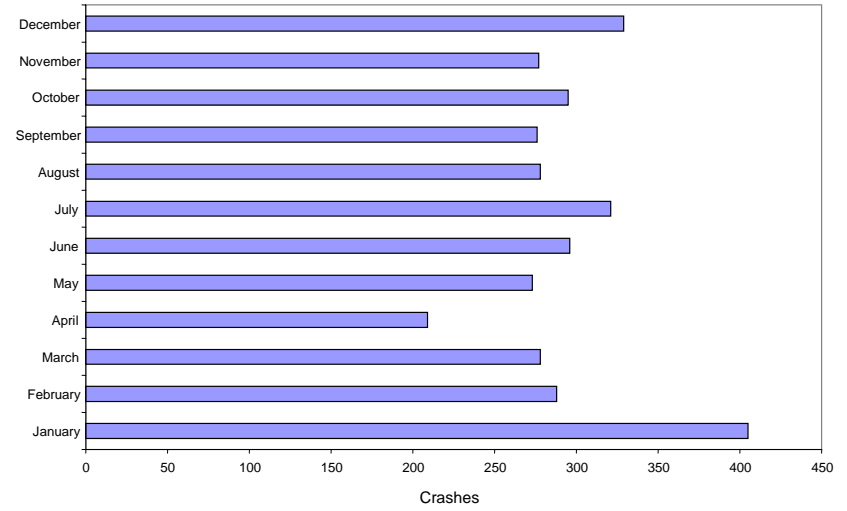
Year	Fatal crashes	Injury crashes	All crashes
1998	1 crash per 26 days	1 crash per 7.7 hours	1 crash per 2.8 hours
1999	1 crash per 21 days	1 crash per 7.5 hours	1 crash per 2.5 hours
2000	1 crash per 26 days	1 crash per 7.1 hours	1 crash per 2.4 hours
2001	1 crash per 28 days	1 crash per 8.0 hours	1 crash per 2.5 hours
Average	1 crash per 25 days	1 crash per 7.6 hours	1 crash per 2.5 hours

Month of Year

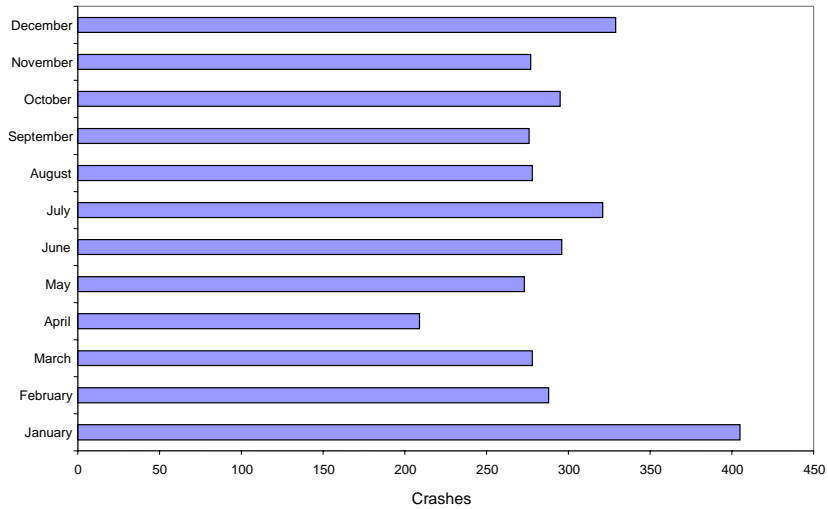
MONTH OF YEAR - 1998



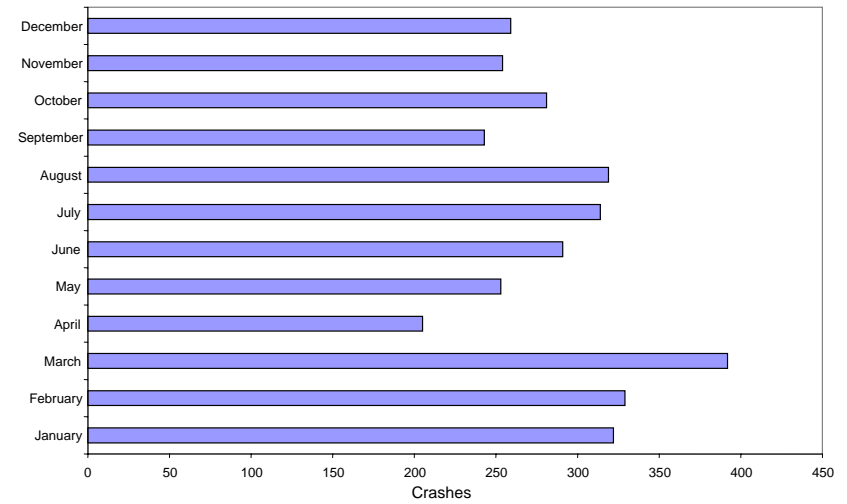
MONTH OF YEAR - 1999



MONTH OF YEAR - 1999



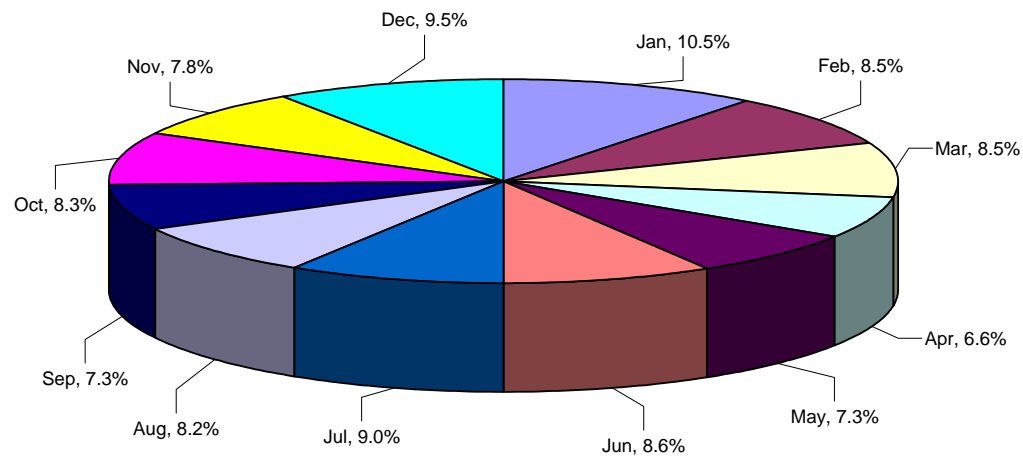
MONTH OF YEAR - 2001



Month of Year

	1998	1999	2000	2001	Total	Percentage
January	320	405	404	322	1,451	10.5%
February	225	288	341	329	1,183	8.5%
March	272	278	232	392	1,174	8.5%
April	230	209	269	205	913	6.6%
May	259	273	223	253	1,008	7.3%
June	282	296	325	291	1,194	8.6%
July	306	321	303	314	1,244	9.0%
August	244	278	295	319	1,136	8.2%
September	218	276	275	243	1,012	7.3%
October	256	295	313	281	1,145	8.3%
November	240	277	311	254	1,082	7.8%
December	292	329	432	259	1,312	9.5%
Total	3,144	3,525	3,723	3,462	13,854	100%

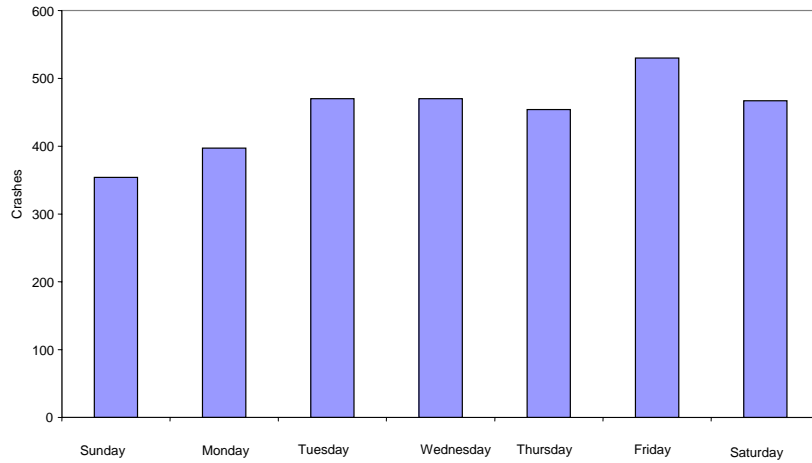
Crashes by Month (1998-2001)



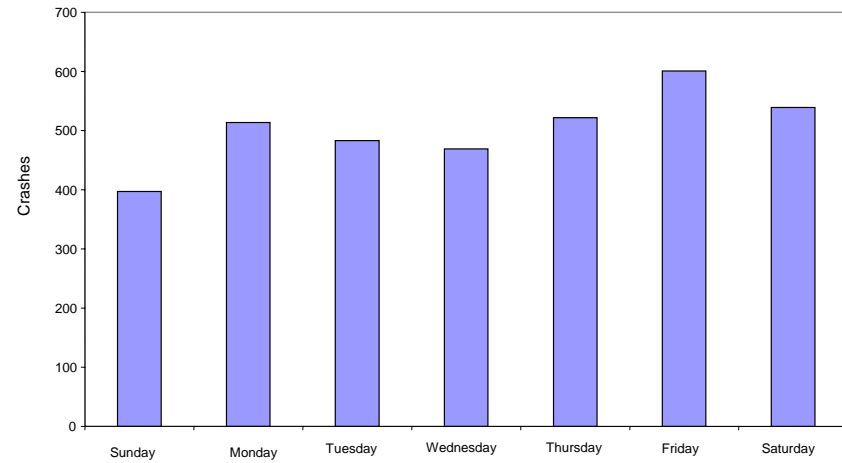
The most crash-prone month is January, followed by December and July

Day of Week

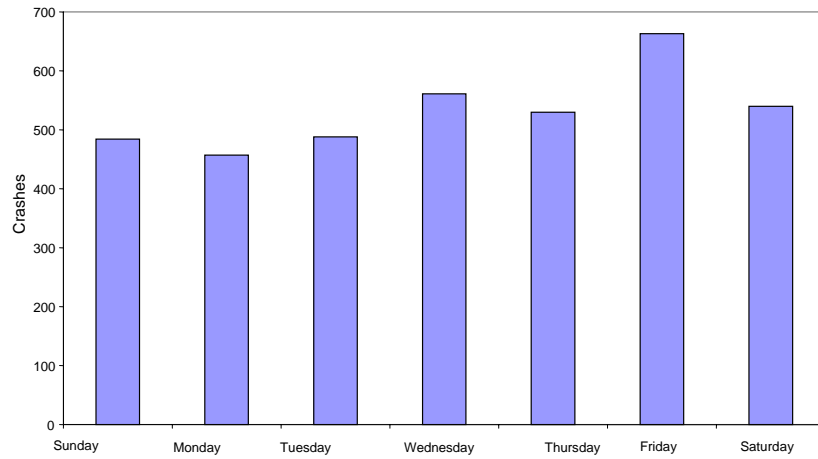
DAY OF WEEK - 1998



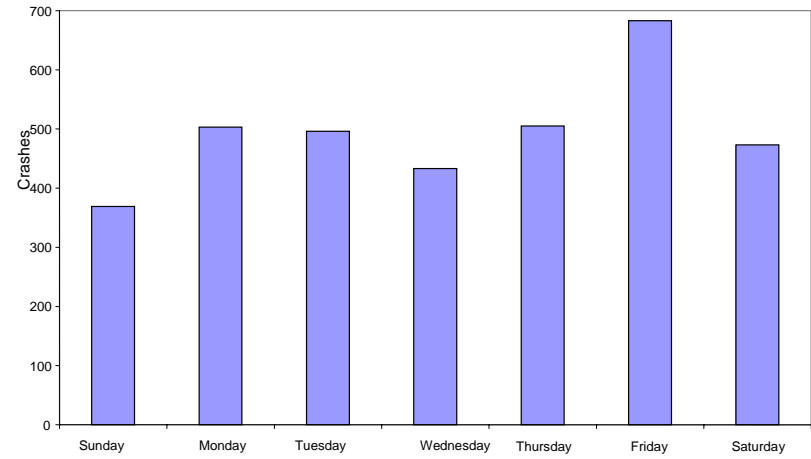
DAY OF WEEK-1999



DAY OF WEEK-2000



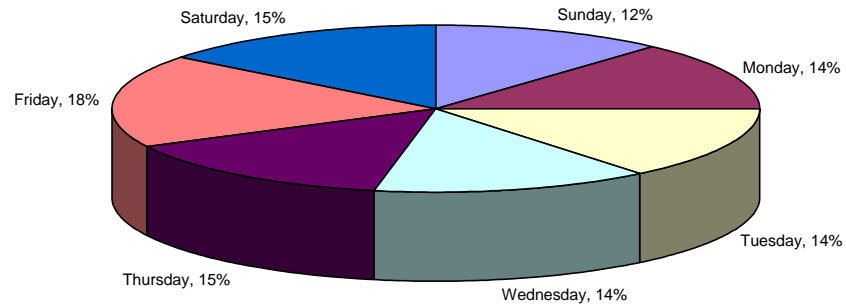
DAY OF WEEK-2001



Day of Week

	1998	1999	2000	2001	Total	Percentage
Sunday	354	397	484	369	1,604	12%
Monday	397	514	457	503	1,871	14%
Tuesday	470	483	488	496	1,937	14%
Wednesday	470	469	561	433	1,933	14%
Thursday	454	522	530	505	2,011	15%
Friday	530	601	663	683	2,477	18%
Saturday	467	539	540	473	2,019	15%
Total	3,144	3,525	3,723	3,462	13,854	100%

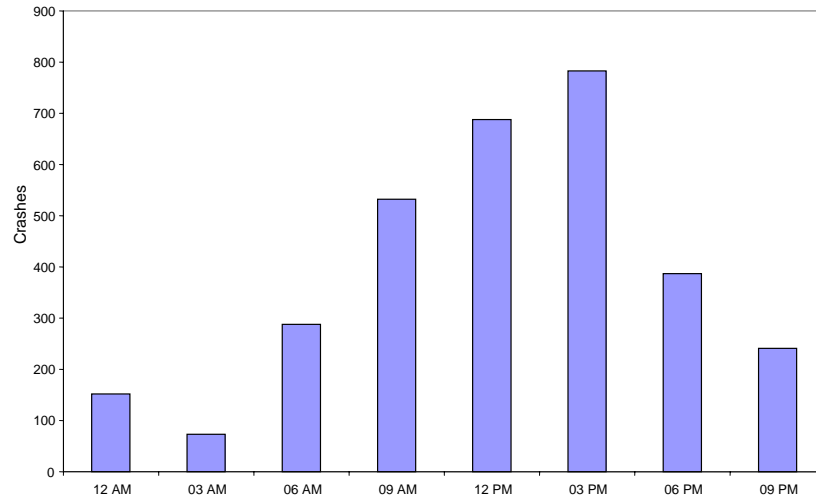
Crash Percentages by Day of Week (1998-2001)



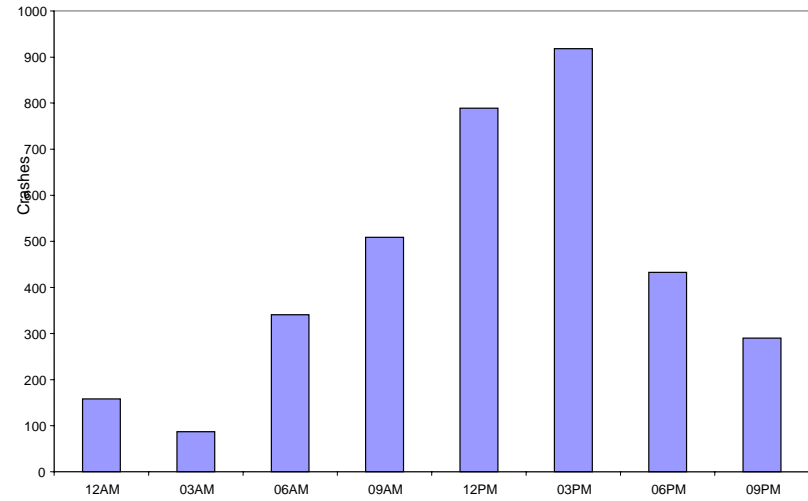
The most crash-prone day is Friday

Time of Day

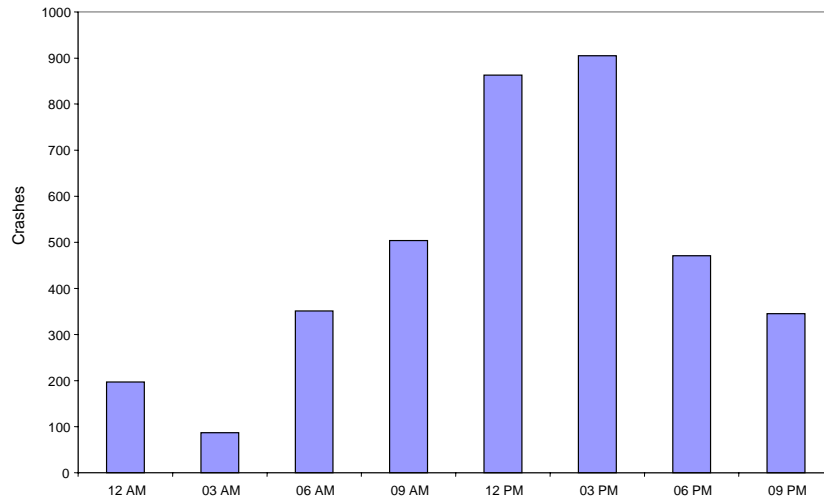
TIME OF DAY - 1998



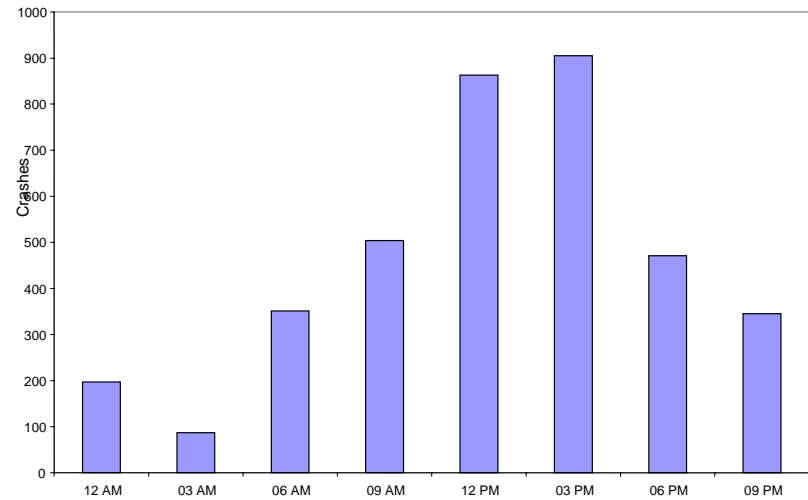
TIME OF DAY - 1999



TIME OF DAY - 2000



TIME OF DAY - 2001

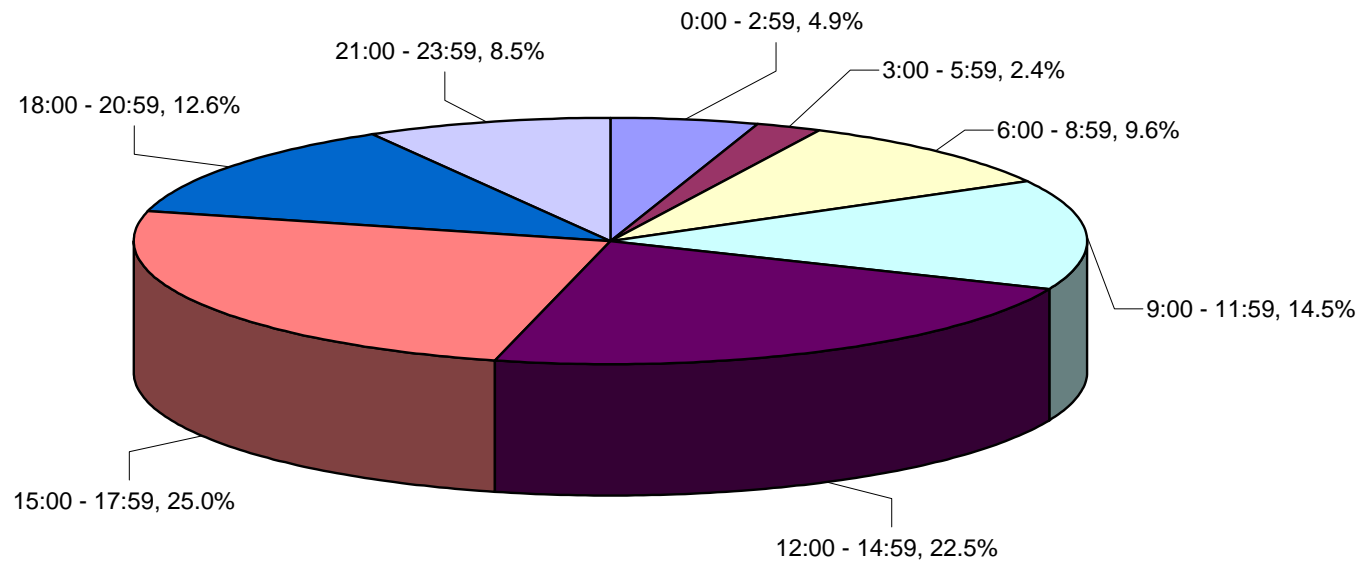


Time of Day

	1998	1999	2000	2001	Total	Percentage
0:00 - 2:59	152	158	197	177	684	4.9%
3:00 - 5:59	73	87	87	85	332	2.4%
6:00 - 8:59	288	341	351	347	1,327	9.6%
9:00 - 11:59	532	509	504	464	2,009	14.5%
12:00 - 14:59	688	789	863	782	3,122	22.5%
15:00 - 17:59	783	918	905	861	3,467	25.0%
18:00 - 20:59	387	433	471	449	1,740	12.6%
21:00 - 23:59	241	290	345	297	1,173	8.5%
Total	3,144	3,525	3,723	3,462	13,854	100%

The most crash-prone period is between 3:00 pm and 6:00 pm

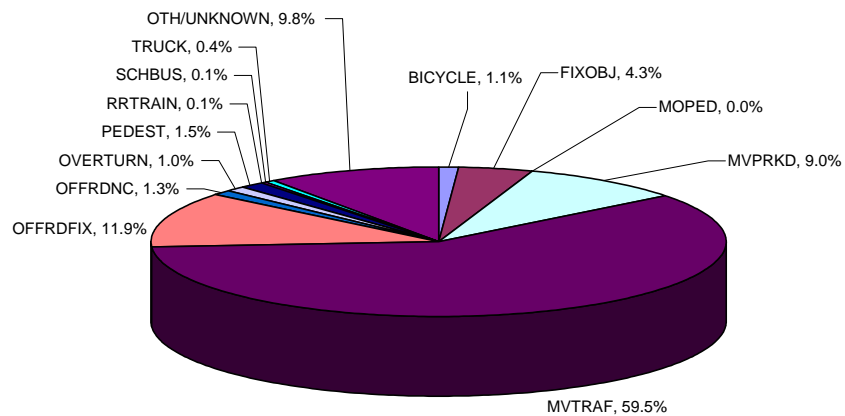
Crashes by Time of Day (1998-2001)



First Harmful Event

Object Hit	1998	1999	2000	2001	Total	Percentage
Bicycle	44	39	42	26	151	1.1%
Fixed object	130	149	185	133	597	4.3%
Moped	0	1	0	0	1	0.0%
Parked vehicle	245	319	354	324	1,242	9.0%
Other motor vehicle in traffic	1,941	2,127	2,165	2,013	8,246	59.5%
Ran off road – hit fixed object	372	408	509	354	1,643	11.9%
Ran off road – no collision	33	32	50	63	178	1.3%
Over turned	36	40	34	28	138	1.0%
Pedestrian	43	54	59	52	208	1.5%
Rail road train	2	2	4	2	10	0.1%
School bus	3	4	2	9	18	0.1%
Truck	10	15	16	18	59	0.4%
Other/Unknown	285	330	303	440	1,358	9.8%
Total	3,144	3,525	3,723	3,462	13,854	100%

Crashes by First Harmful Event (1998-2001)

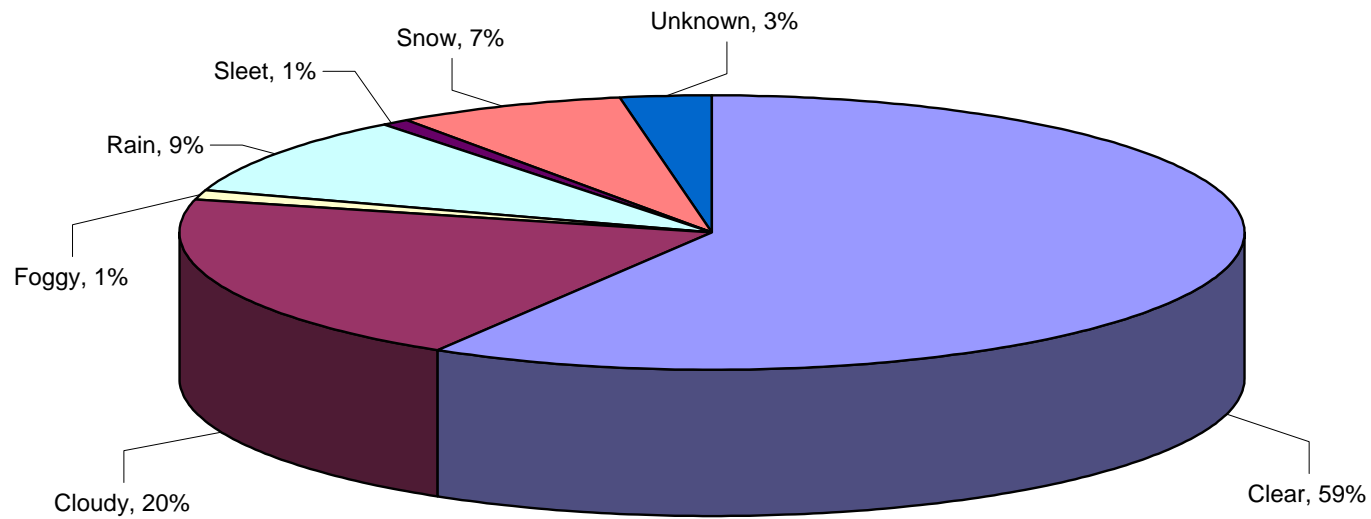


60% of crashes were involving two or more moving vehicles

Crash Environment – Weather

Weather	1998	1999	2000	2001	Total	Percentage
Clear	1,815	2,201	2,040	2,058	8,114	59%
Cloudy	729	592	805	688	2,814	20%
Foggy	37	30	56	50	173	1%
Rain	270	370	356	286	1,282	9%
Sleet	21	20	22	42	105	1%
Snow	198	215	330	238	981	7%
Unknown	74	97	114	100	385	3%
Total	3,144	3,525	3,723	3,462	13,854	100%

Crashes by Weather (1998-2001)

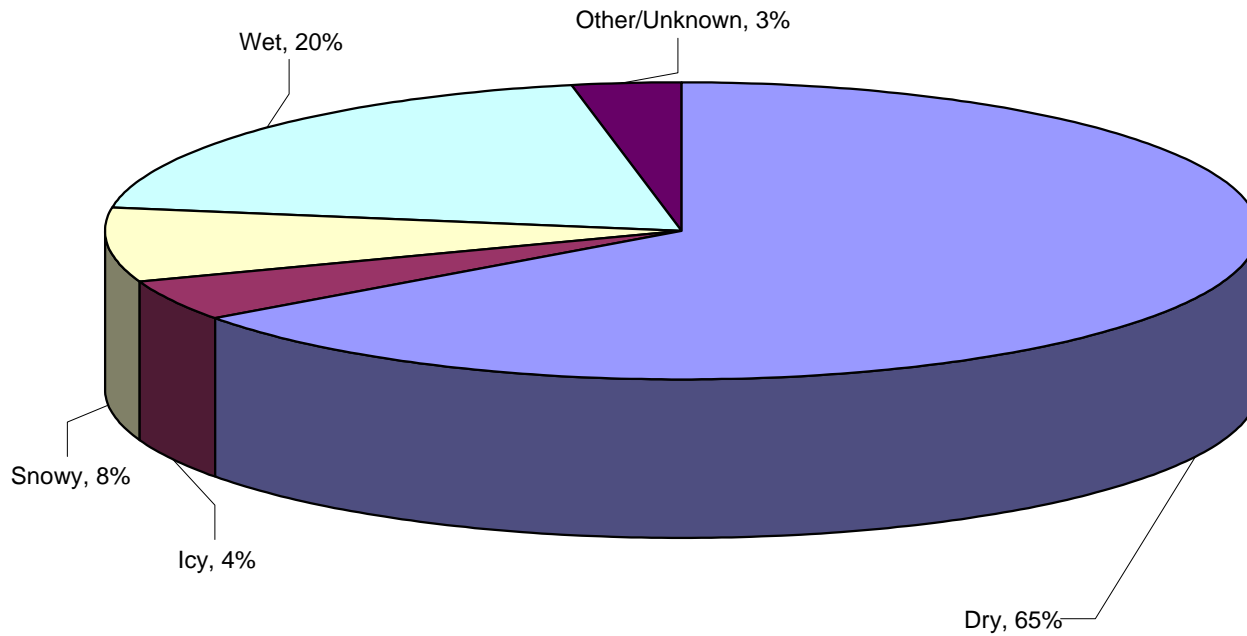


Crash Environment - Road Condition

Road Surface	1998	1999	2000	2001	Total	Percentage
Dry	2,124	2,386	2,296	2,238	9,044	65%
Icy	119	195	162	140	616	4%
Snowy	196	246	376	299	1,117	8%
Wet	637	625	796	675	2,733	20%
Other/Unknown	68	73	93	110	419	3%
Total	3,144	3,525	3,723	3,462	13,854	100%

32% of crashes occurred when road surface was wet, snowy or icy

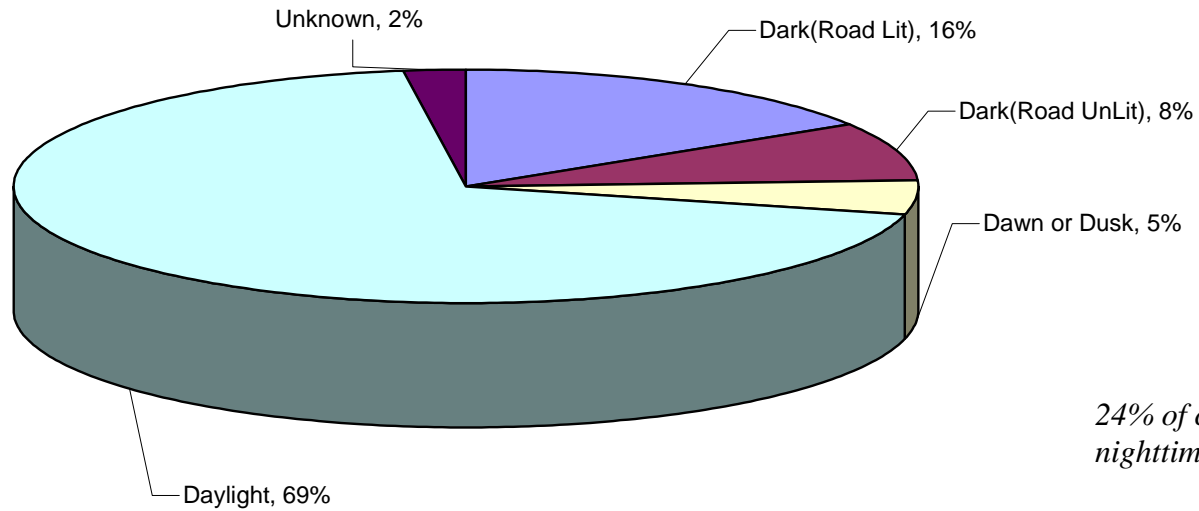
Crashes by Road Surface Condition (1998-2001)



Crash Environment - Light Condition

Lighting	1998	1999	2000	2001	Total	Percentage
Dark (Road Lit)	514	529	592	595	2,230	16%
Dark (Road Unlit)	223	296	317	265	1,101	8%
Dawn or Dusk	144	143	194	172	653	5%
Daylight	2,205	2,485	2,537	2,353	9,580	69%
Unknown	58	72	83	77	290	2%
Total	3,144	3,525	3,723	3,462	13,854	100%

Crashes by Light Condition (1998-2001)

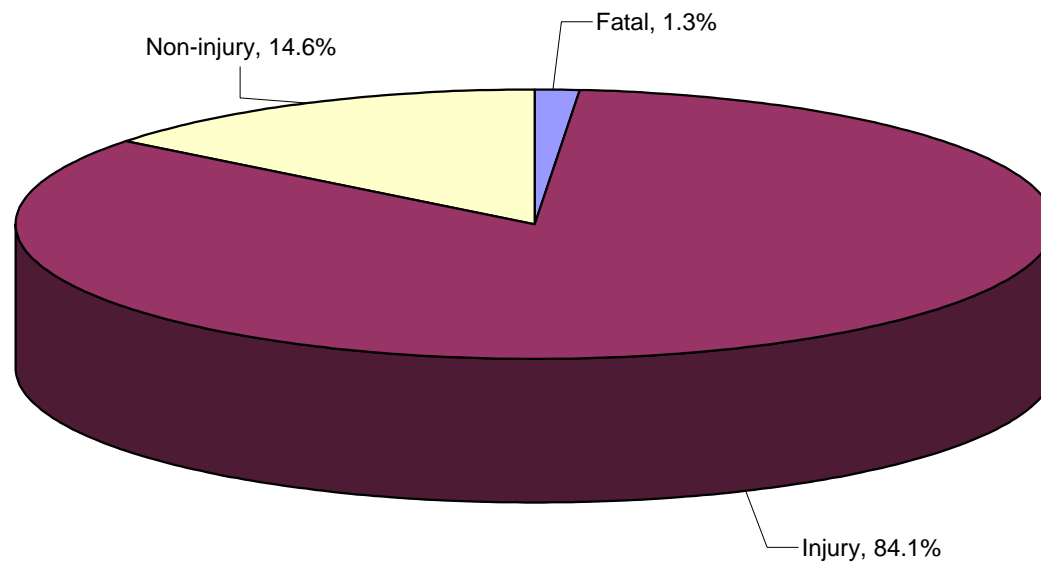


24% of crashes occurred during nighttime

Bicycle Crashes

Year	Fatal crashes	Injury crashes	Non-injury crashes	Total crashes
1998	1	39	4	44
1999	1	32	6	39
2000	0	35	7	42
2001	0	21	5	26
Total	2	127	22	151
Percentage	1.3%	84.1%	14.6%	100.0%

Bicycle Crashes by Severity (1998-2001)

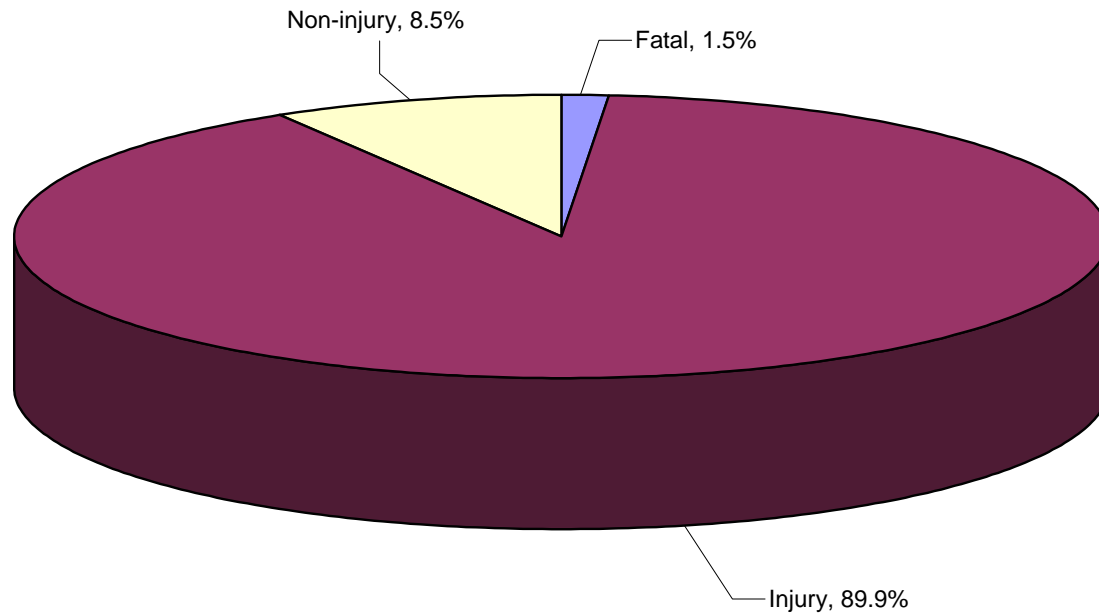


85% of bicycle related crashes resulted in injuries

Pedestrian Crashes

Year	Fatal crashes	Injury crashes	Non-injury crashes	Total crashes
1998	1	42	0	43
1999	1	47	5	53
2000	0	53	6	59
2001	1	37	6	44
Total	3	179	17	199
Percentage	1.5%	89.9%	8.5%	100.0%

Pedestrian Crashes by Severity (1998-2001)



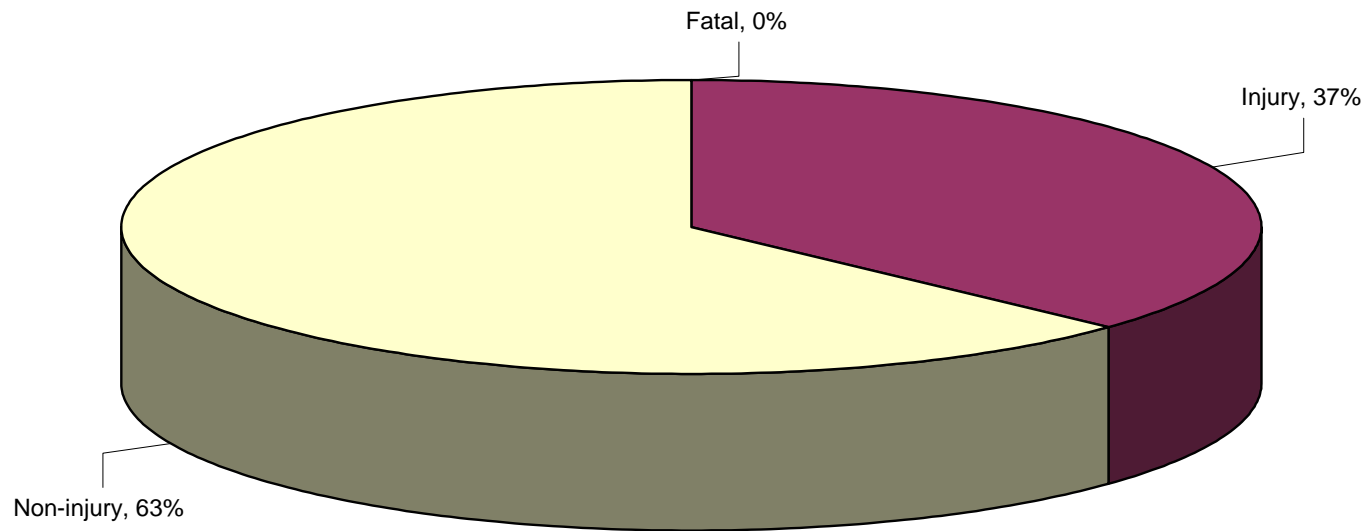
90% of pedestrian related crashes resulted in injuries

Truck Crashes

Year	Fatal crashes	Injury crashes	Non-injury crashes	Total crashes
1998	0	4	6	10
1999	0	5	10	15
2000	0	5	11	16
2001	0	8	10	18
Total	0	22	37	59
Percentage	0%	37%	63%	100%

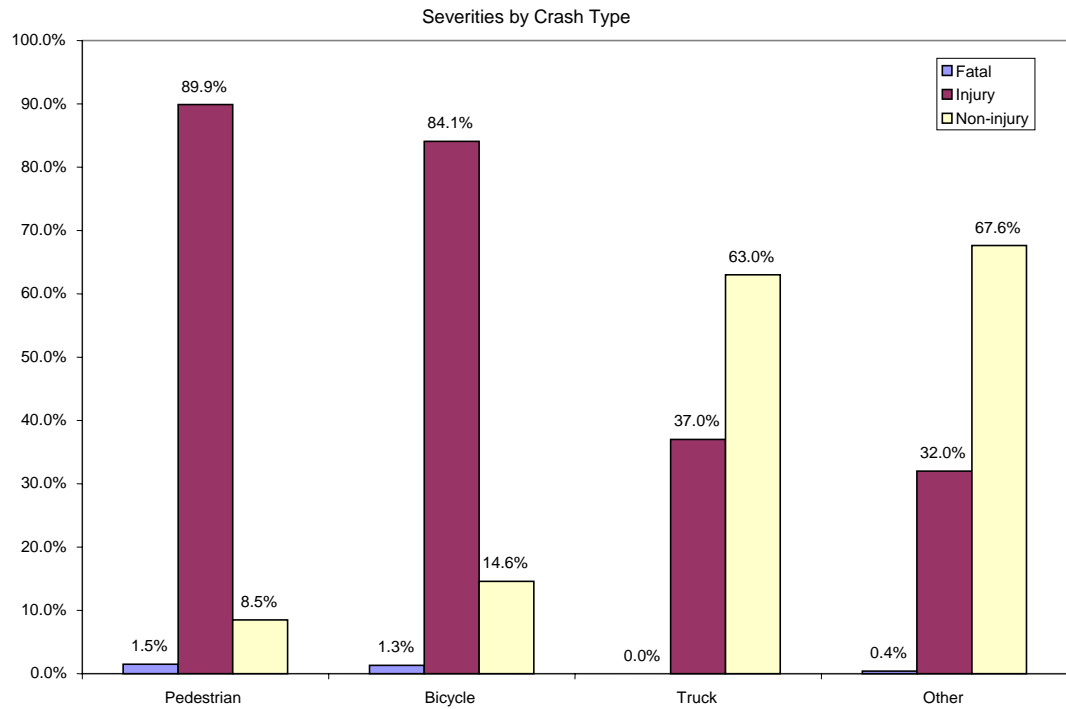
37% of truck related crashes resulted in injuries

Truck Crashes (1998-2001)



Comparison of Pedestrian, Bicycle, Truck and Other Crashes

Crash Type		Fatal crashes	Injury crashes	Non-injury crashes	Total
Pedestrian	Count	3	179	17	199
	Percentage	1.5%	89.9%	8.5%	100%
Bicycle	Count	2	127	22	151
	Percentage	1.3%	84.1%	14.6%	100%
Truck	Count	0	22	37	59
	Percentage	0%	37%	63%	100%
Other	Count	53	4,301	9,091	13,445
	Percentage	0.4%	32.0%	67.6%	100%
All	Count	58	4,629	9,167	13,854
	Percentage	0.4%	33.4%	66.2%	100%

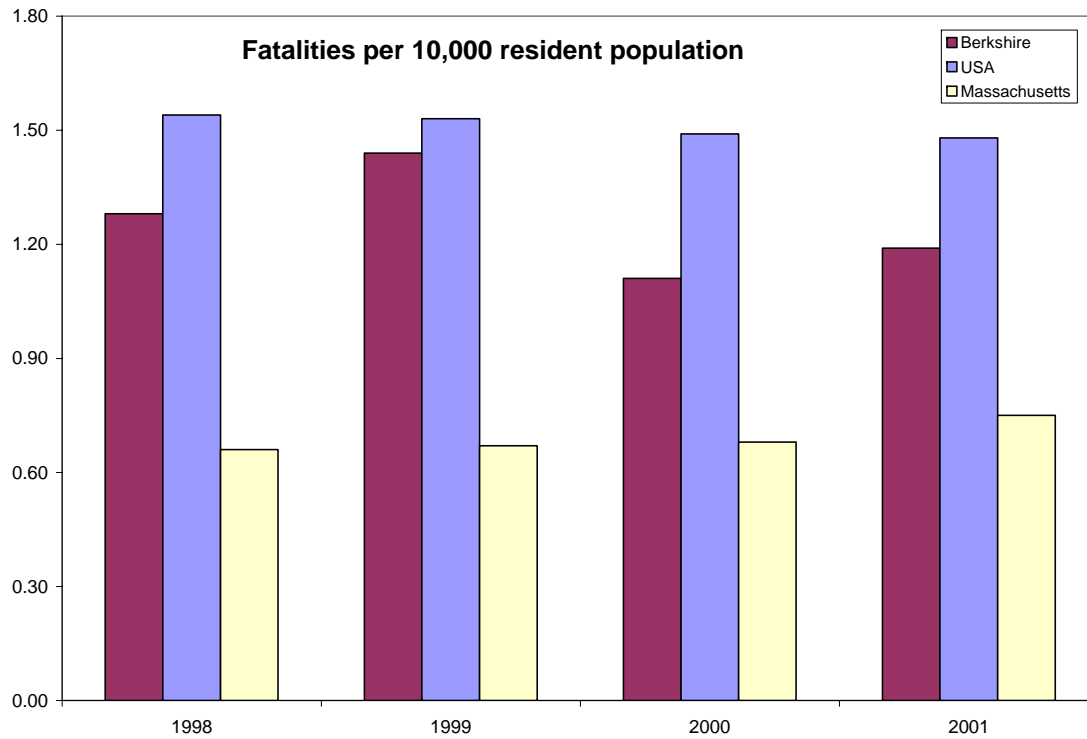


Crashes involving pedestrians, bicycles and trucks resulted in a higher injury rate than other crash types

Comparative Statistics: Fatalities per 10,000 Resident Population

Year	Berkshire	Massachusetts	USA
1998	1.28	0.66	1.54
1999	1.44	0.67	1.53
2000	1.11	0.68	1.49
2001	1.19	0.75	1.48

Source: Fatality data – FARS, National Highway Traffic Safety Administration (1998-2001).



Berkshire's fatality rate is higher than the state's fatality rate

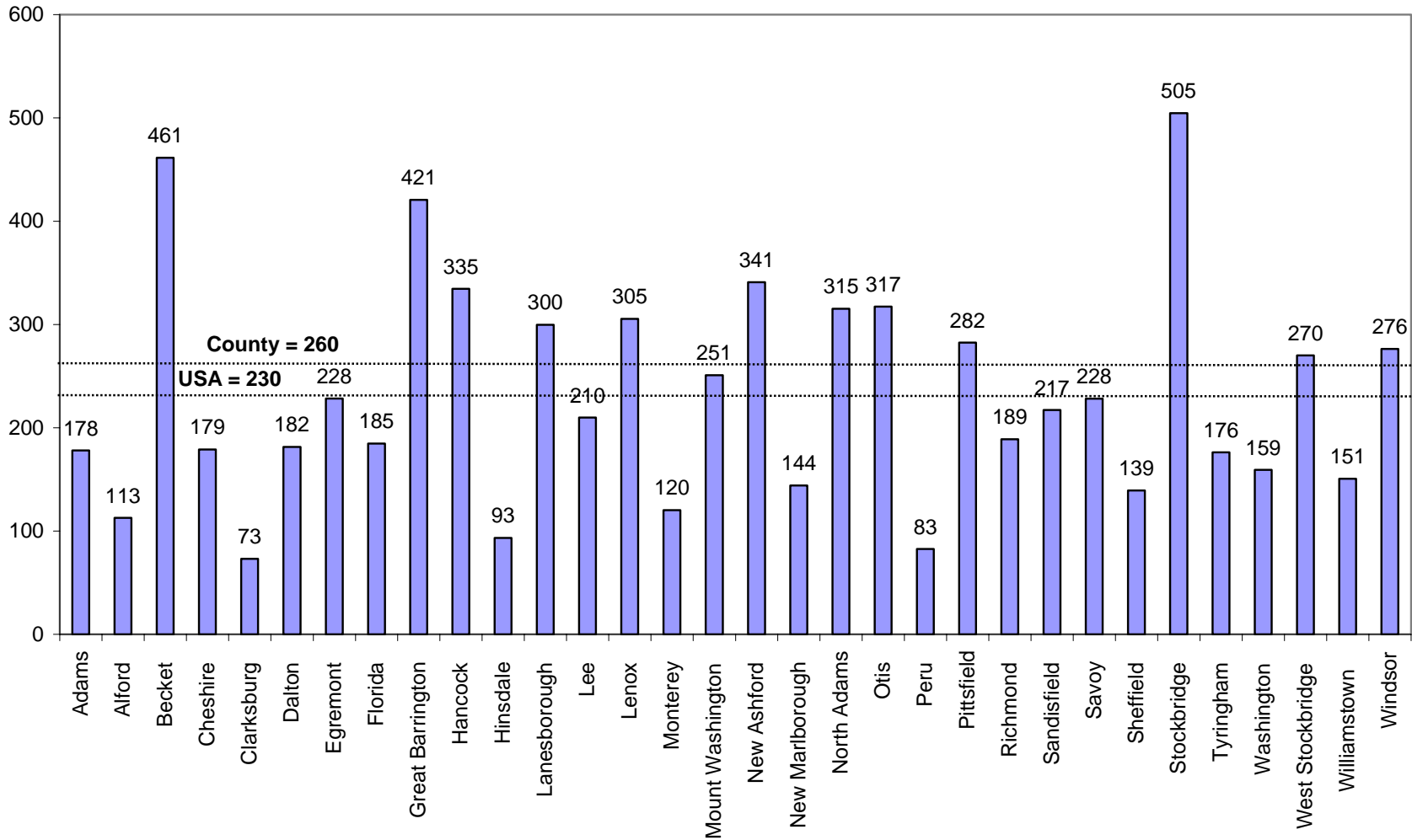
Crashes by Town

Town	Crashes				
	1998	1999	2000	2001	Total
Adams	144	152	162	164	622
Alford	4	3	5	6	18
Becket	56	87	78	80	301
Cheshire	68	52	68	56	244
Clarksburg	12	15	11	9	47
Dalton	110	132	129	124	495
Egremont	21	26	35	33	115
Florida	8	13	16	14	51
Great Barrington	289	313	326	350	1,278
Hancock	17	23	15	19	74
Hinsdale	13	18	19	19	69
Lanesborough	86	90	101	83	360
Lee	113	123	134	115	485
Lenox	167	173	161	122	623
Monterey	16	9	6	10	41
Mount Washington	2	3	3	5	13
New Ashford	7	11	8	4	30
New Marlborough	18	20	26	15	79
North Adams	358	502	563	482	1,905
Otis	34	36	39	44	153
Peru	0	7	10	9	26
Pittsfield	1,240	1,265	1,321	1,311	5,137
Richmond	20	28	40	34	122
Sandisfield	17	18	13	16	64
Savoy	15	12	21	16	64
Sheffield	33	58	57	27	175
Stockbridge	104	123	118	114	459
Tyringham	4	6	4	11	25
Washington	12	8	11	6	37
West Stockbridge	24	48	47	36	155
Williamstown	120	125	147	105	497
Windsor	12	26	29	23	90
Berkshire County	3,144	3,525	3,723	3,462	13,854

Pittsfield, North Adams and Great Barrington had over 1,000 accidents between 1998 and 2001

Crash Rates by Town (1998-2001)

Accidents per 10,000 Resident Population (1998-2001)



Pedestrian Crashes by Town

Town	Crashes				
	1998	1999	2000	2001	Total
Adams	2	2	5	8	17
Alford					
Becket					
Cheshire		2	1		3
Clarksburg					
Dalton	1		2	1	4
Egremont					
Florida					
Great Barrington	5	5	3	7	20
Hancock				1	1
Hinsdale					
Lanesborough			1		1
Lee		1	2		3
Lenox	1		2	2	5
Monterey					
Mount Washington					
New Ashford					
New Marlborough					
North Adams	4	12	16	7	39
Otis		1			1
Peru					
Pittsfield	24	29	24	20	97
Richmond					
Sandisfield		1			1
Savoy					
Sheffield					
Stockbridge			1	2	3
Tyringham					
Washington			1		1
West Stockbridge					
Williamstown	6	1	1	4	12
Windsor					
Berkshire County	43	54	59	52	208

Bicycle Crashes by Town

Town	Crashes				
	1998	1999	2000	2001	Total
Adams	2	2	3	3	10
Alford					
Becket				1	1
Cheshire	1		1		2
Clarksburg					
Dalton	2		2		4
Egremont				1	1
Florida					
Great Barrington		4		3	7
Hancock					
Hinsdale					
Lanesborough	1	1	1		3
Lee					
Lenox	2	3	2	2	9
Monterey					
Mount Washington					
New Ashford					
New Marlborough					
North Adams	4	3	5		12
Otis					
Peru					
Pittsfield	31	22	23	15	91
Richmond		1	1		2
Sandisfield					
Savoy					
Sheffield			1		1
Stockbridge	1	2			3
Tyringham					
Washington					
West Stockbridge					
Williamstown		1	2	1	4
Windsor			1		1
Berkshire County	44	39	42	26	151

Truck Crashes by Town

Town	Crashes				
	1998	1999	2000	2001	Total
Adams		1		1	2
Alford					
Becket		1			1
Cheshire	1				1
Clarksburg	1				1
Dalton				1	1
Egremont					
Florida					
Great Barrington			1		1
Hancock					
Hinsdale		1		1	2
Lanesborough					
Lee	3	3		2	8
Lenox		1	1	2	4
Monterey					
Mount Washington					
New Ashford					
New Marlborough					
North Adams	2		6	3	11
Otis		1			1
Peru					
Pittsfield	2	5	6	5	18
Richmond				1	1
Sandisfield		1			1
Savoy					
Sheffield	1		1	1	3
Stockbridge					
Tyringham					
Washington				1	1
West Stockbridge					
Williamstown		1	1		2
Windsor					
Berkshire County	10	15	16	18	59

High Traffic Crash Intersections (1998 - 2001)

Criteria:

Pittsfield - intersections with 25 or more crashes are listed.

Dalton, Great Barrington, Lenox, North Adams and Stockbridge - intersections with 15 or more crashes.

Other towns - intersections with 10 or more crashes.

Town	Intersection	1998	1999	2000	2001	Total
Adams	Center St & Commercial St	6	5	6	2	19
Adams	Columbia St & Hoosac St	1	3	5	5	14
Dalton	Housatonic St & Main St	5	7	3	8	23
Dalton	Main St & South St	4	3	9	1	17
Dalton	Main St & North St	4	4	3	6	17
Great Barrington	State Rd & Stockbridge Rd	1	2	7	16	26
Great Barrington	Main St & St James Pl	5	4	10	3	22
Great Barrington	Elm St & Main St	2	3	7	5	17
Great Barrington	Main St & Railroad St	3	2	5	5	15
Lanesborough	Berkshire Mall Dr & Cheshire Rd	1	6	3	5	15
Lanesborough	Old State Rd & Cheshire Rd	3	6	0	2	11
Lanesborough	Berkshire Mall Dr & S Main St	1	4	2	4	11
Lenox	Lee Rd & Lenox Bypass	18	20	22	19	79
Lenox	Holmes Rd & Pittsfield Rd	6	6	8	3	23
Lenox	New Lenox Rd & Pittsfield Rd	3	2	9	4	18
Lenox	Lenox Bypass & Walker St	3	2	3	7	15
North Adams	Eagle St/Ashland St & Main St	7	9	7	13	36
North Adams	Eagle St & Union St	4	5	10	8	27
North Adams	Curran Memorial Hwy & Hodges Cross Rd	5	5	2	9	21
North Adams	Holden St & Veterans Memorial Dr	0	5	6	6	17
North Adams	Canal St & Union St	3	6	4	3	16

Town	Intersection	1998	1999	2000	2001	Total
Pittsfield	First St & Tyler St	24	19	15	19	77
Pittsfield	South St & Park Pl/Bank Row	18	7	17	16	58
Pittsfield	South St & W Housatonic St & E Housatonic St	15	11	12	16	54
Pittsfield	East St & Park Pl/Bank Row & Allen St	15	10	14	14	53
Pittsfield	North St & Linden St & Maplewood Ave	9	15	10	16	50
Pittsfield	Cheshire Rd & Dalton Ave & Merrill Rd	9	10	15	16	50
Pittsfield	North St & Wahconah St & Burbank St	7	9	13	9	38
Pittsfield	Fenn St & First St	8	4	13	9	34
Pittsfield	North St & West St & Park Pl	2	11	7	12	32
Pittsfield	North St & Fenn St & Depot St	5	10	9	4	28
Pittsfield	E Housatonic St & Bartlett Ave	8	6	8	6	28
Pittsfield	Holmes Rd & Williams St	4	6	14	2	26
Pittsfield	North St & Columbus Ave & Eagle St	5	7	7	6	25
Pittsfield	North St & Tyler St	6	4	6	9	25
Stockbridge	Main St & South St & Pine St	4	8	14	11	37
Stockbridge	East St & Main St	4	16	11	5	36
Stockbridge	Elm St & Main St	1	4	4	7	16
Williamstown	Main St & North St	4	2	9	2	17
Williamstown	Route 7 & Route 43	5	6	1	5	17
Williamstown	Adams Rd & Main St	2	0	3	7	12